

TIBCON Motor Run capacitors are developed after extensive Research and Development. Our team has studied electrical characteristics of Motor Run AC Applications and has developed unique capacitors that can withstand the load of the current for many years.

The capacitors are subjected to extensive and vigorous testing and as a result we are able to give the industry capacitors that can be matched by none in terms of quality, durability and reliability.

Applications include: Air Conditioners, Motors, Compressors, Air Handlers, Refrigeration Units, Furnaces, Machine Tools, Conveyors, Heat Pumps etc.

TIBCON ADVANTAGE

Unique Features

- Made with special technology metalized film that extends the life of the capacitors.
- Can operate with the same efficiency over a wide range of temperatures and humidity.
- Manufacturing process of the capacitor is tailor made to suit the requirements of the application.
- A dual motor run capacitor comes as a single unit with a dual purpose
- Can be used in appliances such as Air – Conditioners, Washing Machines and various other appliances where two motors operate singly or separately.
- Has a built-in Pressure Sensitive Interrupter designed to rupture connection whenever there is a rise in internal pressure.
- Low internal power losses conserve energy
- Single and Dual Ratings
- Non PCB Encapsulation
- ECO Friendly
- High Insulation Resistance
- Safe Tin Plated Terminals.

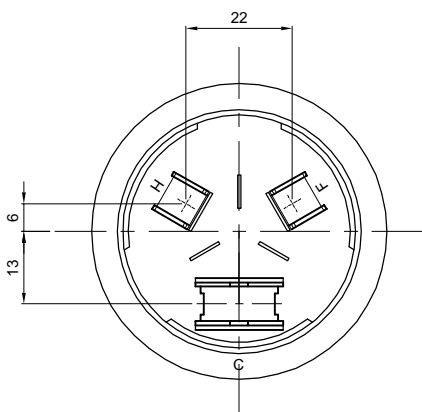
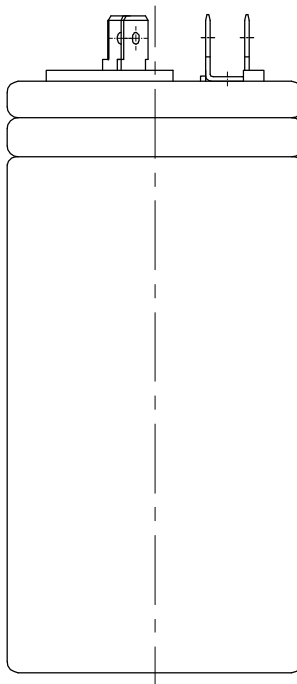
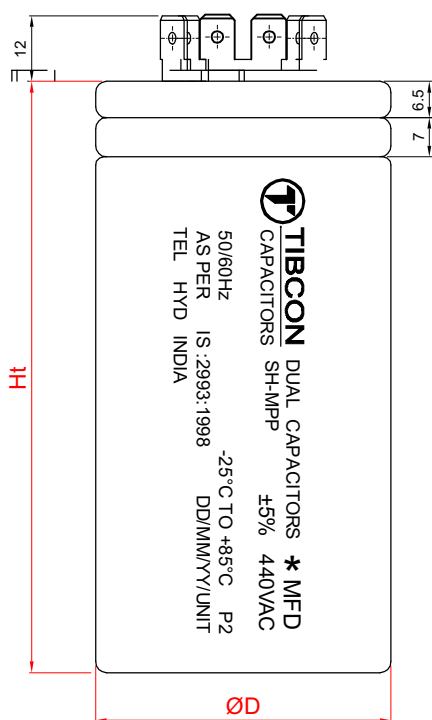


Tibrewala Electronics Limited

Tibrewala Electronics Limited, Hyderabad, is one of India's leading Capacitor manufacturer with ISO 9001-2008 certification. We are equipped with the latest and world class state-of-the-art manufacturing plant.

Manufactured by :
TIBREWALA ELECTRONICS LTD.
6-56/2/40, Bombay Highway, Balanagar, Hyderabad-500 037, AP, INDIA.
Tel : +91 40 23775351, Fax : +91 40 23775360, Email : info@tibcon.net
Visit us at : www.tibcon.net

© Reproduction, publication and dissemination of this technical literature and the contents therein without TIBREWALA ELECTRONICS LTD. prior written permission is strictly prohibited



440 V Burst Proof Series (P2 Type)

S.NO.	* MFD	ØDxH
1	30.0+3.0	Ø53X85
2	30.0+4.0	Ø53X85
3	45.0+4.0	Ø53X106
4	50.0+4.0	Ø53X106
5	45.0+7.5	Ø53X106
6	50.0+7.5	Ø53X106
7	36.0+6.0	Ø53X106
8	45.0+6.0	Ø53X106
9	50.0+6.0	Ø53X106

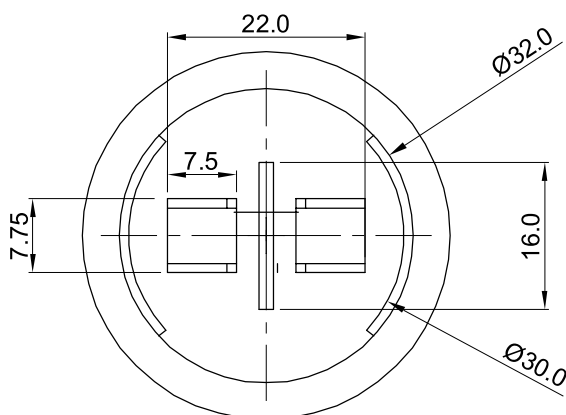
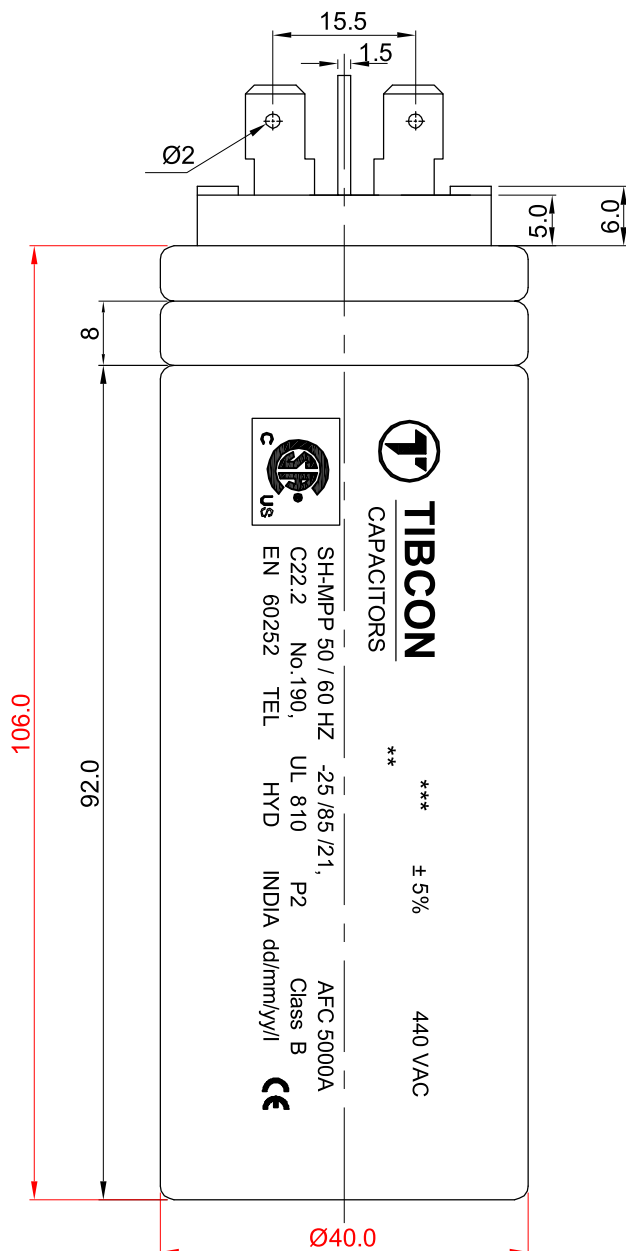
Manufactured by :

TIBREWALA ELECTRONICS LTD.

6-56/2/40, Bombay Highway, Balanagar, Hyderabad-500 037, AP, INDIA.

Tel : +91 40 23775351, Fax : +91 40 23775360, Email : info@tibcon.net

© Reproduction, publication and dissemination of this technical literature and the contents therein without TIBREWALA ELECTRONICS LTD. prior written permission is strictly prohibited



440 V Burst Proof Series (P2 Type)

S.NO.	* MFD	ØD	Ht
1	25.00	40.0	95
2	35.00	40.0	95
3	36.00	40.0	95
4	45.00	40.0	95



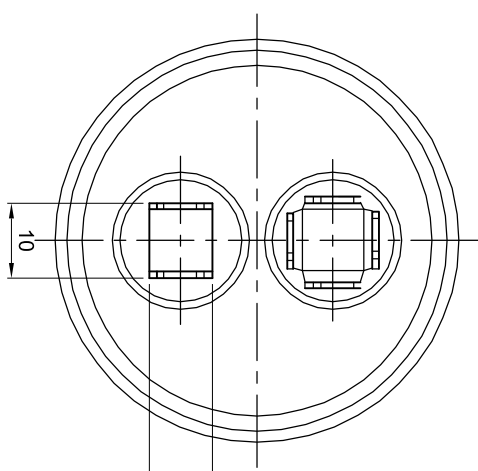
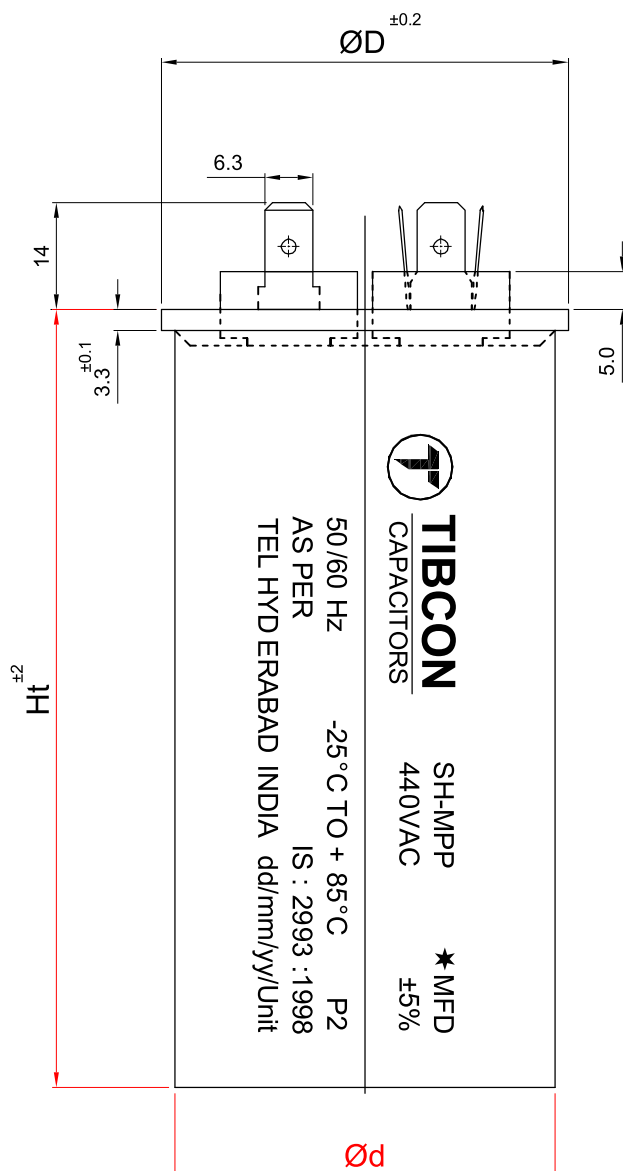
C22.2 No.190 & UL 810

Manufactured by :
TIBREWALA ELECTRONICS LTD.
6-56/2/40, Bombay Highway, Balanagar, Hyderabad-500 037, AP, INDIA.
Tel : +91 40 23775351, Fax : +91 40 23775360, Email : info@tibcon.net
Visit us at : www.tibcon.net

© Reproduction, publication and dissemination of this technical literature and the contents therein without TIBREWALA ELECTRONICS LTD. prior written permission is strictly prohibited



IEC 60831-1&2

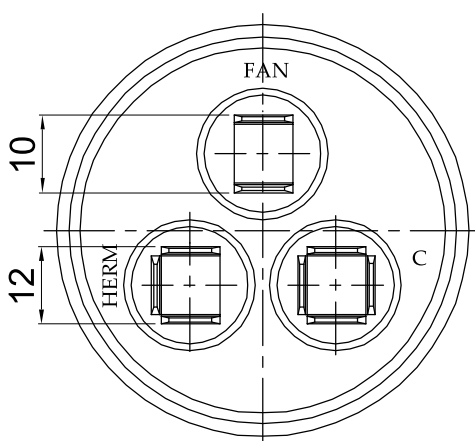
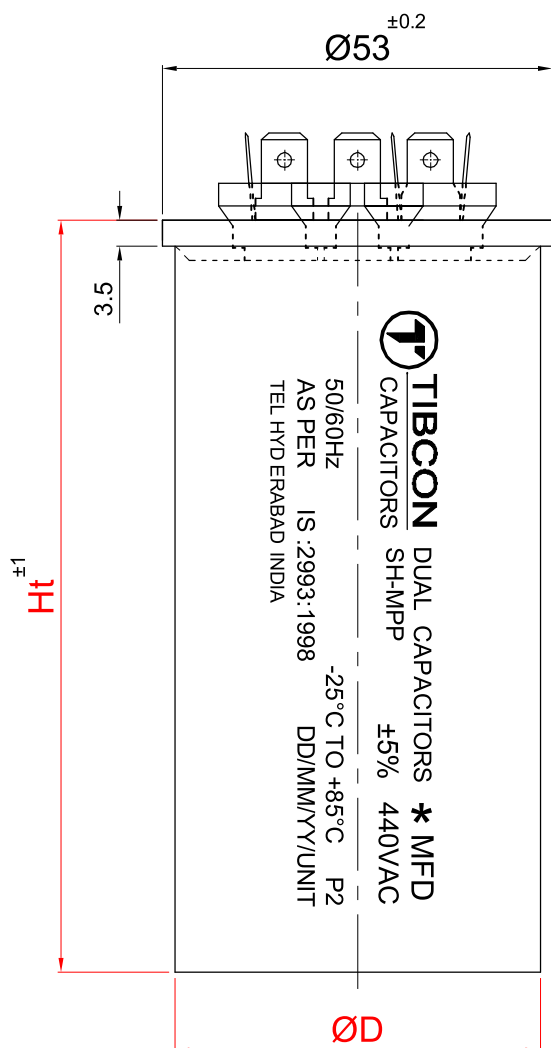


440 V Burst Proof Series (P2 Type)

S.NO.	* MFD	ØD	Ht
1	25.0	45	82
2	30.0	45	82
3	35.0	40	102
4	36.0	40	102
5	40.0	40	102
6	45.0	40	102
7	50.0	45	102
8	60.0	45	102
9	70.0	50	102
10	75.0	50	102
11	80.0	50	102
12	50.0	50	102
13	60.0	50	102

Manufactured by :
TIBREWALA ELECTRONICS LTD.
6-56/2/40, Bombay Highway, Balanagar, Hyderabad-500 037, AP, INDIA.
Tel : +91 40 23775351, Fax : +91 40 23775360, Email : info@tibcon.net
Visit us at : www.tibcon.net

© Reproduction, publication and dissemination of this technical literature and the contents therein without TIBREWALA ELECTRONICS LTD. prior written permission is strictly prohibited



**440 V Burst Proof Series
(P2 Type)**

S.NO.	* MFD	Can Sizes ($\varnothing D \times H$)
1	36+2	50x102
2	36+6	50x82 / 50x102
3	45+2	50x102
4	45+4	50x82 / 50x102
5	45+6	50x82 / 50x102
6	50+2	50x102
7	50+4	50x102
8	50+6	50x102
9	60+10	50x102

Manufactured by :
TIBREWALA ELECTRONICS LTD.
6-56/2/40, Bombay Highway, Balanagar, Hyderabad-500 037, AP, INDIA.
Tel : +91 40 23775351, Fax : +91 40 23775360, Email : info@tibcon.net
Visit us at : www.tibcon.net

© Reproduction, publication and dissemination of this technical literature and the contents therein without TIBREWALA ELECTRONICS LTD. prior written permission is strictly prohibited



MOTOR RUN AC CAPACITORS BURST PROOF SERIES DRY ALUMINIUM CAN											As Per IS : 2993					
Capacitance (µF)	PART CODE		DIMENSIONS		PART CODE		VOLTAGE	PART CODE		PLASTIC TOP / METAL TOP PT = 0 / MT = 1	PART CODE		TERMINATION	PART CODE		ORDERING CODE
	A	B	(mm)		B	C		D	E							
30.00 + 3.00	303		53 X 85		1	440	1		1	PLASTIC TOP	0		TAG	1	BP303.1.1.0.1	
30.00 + 4.00	304		53 X 85		1	440	1		1	PLASTIC TOP	0		TAG	1	BP304.1.1.0.1	
45.00 + 4.00	454		53 X 106		2	440	1		1	PLASTIC TOP	0		TAG	1	BP454.2.1.0.1	
50.00 + 4.00	504		53 X 106		2	440	1		1	PLASTIC TOP	0		TAG	1	BP504.2.1.0.1	
45.00 + 7.50	457		53 X 106		2	440	1		1	PLASTIC TOP	0		TAG	1	BP457.2.1.0.1	
50.00 + 7.50	507		53 X 106		2	440	1		1	PLASTIC TOP	0		TAG	1	BP507.2.1.0.1	
36.00 + 6.00	366		53 X 106		2	440	1		1	PLASTIC TOP	0		TAG	1	BP366.2.1.0.1	
45.00 + 6.00	456		53 X 106		2	440	1		1	PLASTIC TOP	0		TAG	1	BP456.2.1.0.1	
50.00 + 6.00	506		53 X 106		2	440	1		1	PLASTIC TOP	0		TAG	1	BP506.2.1.0.1	
25.00	25		40 X 106		3	440	1		1	PLASTIC TOP	0		TAG	1	BP25.3.1.0.1	
35.00	35		40 X 106		3	440	1		1	PLASTIC TOP	0		TAG	1	BP35.3.1.0.1	
36.00	36		40 X 106		3	440	1		1	PLASTIC TOP	0		TAG	1	BP36.3.1.0.1	
45.00	45		40 X 106		3	440	1		1	PLASTIC TOP	0		TAG	1	BP45.3.1.0.1	
36.00 + 2.00	362		50 X 102		4	440	1		1	METAL TOP	1		TAG	1	BP362.4.1.1.1	
36.00 + 6.00	366		50 X 82		5	440	1		1	METAL TOP	1		TAG	1	BP366.5.1.1.1	
36.00 + 6.00	366		50 X 102		4	440	1		1	METAL TOP	1		TAG	1	BP366.4.1.1.1	
45.00 + 2.00	452		50 X 102		4	440	1		1	METAL TOP	1		TAG	1	BP452.4.1.1.1	
45.00 + 4.00	454		50 X 82		5	440	1		1	METAL TOP	1		TAG	1	BP454.5.1.1.1	
45.00 + 4.00	454		50 X 102		4	440	1		1	METAL TOP	1		TAG	1	BP454.4.1.1.1	
45.00 + 6.00	456		50 X 82		5	440	1		1	METAL TOP	1		TAG	1	BP456.5.1.1.1	
45.00 + 6.00	456		50 X 102		4	440	1		1	METAL TOP	1		TAG	1	BP456.4.1.1.1	
50.00 + 2.00	52		50 X 102		4	440	1		1	METAL TOP	1		TAG	1	BP52.4.1.1.1	
50.00 + 4.00	54		50 X 102		4	440	1		1	METAL TOP	1		TAG	1	BP54.4.1.1.1	
50.00 + 6.00	56		50 X 102		4	440	1		1	METAL TOP	1		TAG	1	BP56.4.1.1.1	
60.00 + 10.00	6010		50 X 102		4	440	1		1	METAL TOP	1		TAG	1	BP6010.4.1.1.1	
25.00	25		45 X 82		6	440	1		1	METAL TOP	1		TAG	1	BP25.6.1.1.1	
30.00	30		45 X 82		6	440	1		1	METAL TOP	1		TAG	1	BP30.6.1.1.1	
35.00	35		40 X 102		7	440	1		1	METAL TOP	1		TAG	1	BP35.7.1.1.1	
36.00	36		40 X 102		7	440	1		1	METAL TOP	1		TAG	1	BP36.7.1.1.1	
40.00	40		40 X 102		7	440	1		1	METAL TOP	1		TAG	1	BP40.7.1.1.1	
45.00	45		40 X 102		7	440	1		1	METAL TOP	1		TAG	1	BP45.7.1.1.1	
50.00	50		45 X 102		8	440	1		1	METAL TOP	1		TAG	1	BP50.8.1.1.1	
60.00	60		45 X 102		8	440	1		1	METAL TOP	1		TAG	1	BP60.8.1.1.1	
70.00	70		50 X 102		4	440	1		1	METAL TOP	1		TAG	1	BP70.4.1.1.1	
75.00	75		50 X 102		4	440	1		1	METAL TOP	1		TAG	1	BP75.4.1.1.1	
80.00	80		50 X 102		4	440	1		1	METAL TOP	1		TAG	1	BP80.4.1.1.1	
50.00	50		50 X 102		4	440	1		1	METAL TOP	1		TAG	1	BP50.4.1.1.1	
60.00	60		50 X 102		4	440	1		1	METAL TOP	1		TAG	1	BP60.4.1.1.1	

Manufactured by :
TIBREWALA ELECTRONICS LTD.
6-56/2/40, Bombay Highway, Balanagar, Hyderabad-500 037, AP, INDIA.
Tel : +91 40 23775351, Fax : +91 40 23775360, Email : info@tibcon.net
Visit us at : www.tibcon.net

© Reproduction, publication and dissemination of this technical literature and the contents therein without TIBREWALA ELECTRONICS LTD. prior written permission is strictly prohibited



IEC 60831-1&2